

[Home](#)
[Knowledge Base](#)
[Help Videos](#)
[Message Boards](#)
[Downloads](#)

- CARDEX
- CUSTOM FORMS
- DATA IMPORT/EXPORT
- E-MAIL FROM POINT
- FANNIE MAE
- FOLDER/FILE MANAGEMENT
- FREDDIE MAC LOAN PROSPECTOR®
- INSTALLATION
- LOAN/PROCESSING**
- LOANBRIDGE
- MISCELLANEOUS
- POINT DATA SERVER (PDS)
- PRINTING
- REPORTS
- SERVICES
- WEBCASTER

Knowledge Base :: LOAN/PROCESSING :: 0654 Updated Truth-In-Lending, required July 30, 2009 (Point v.7.0)

0654 Updated Truth-In-Lending, required July 30, 2009 (Point v.7.0)

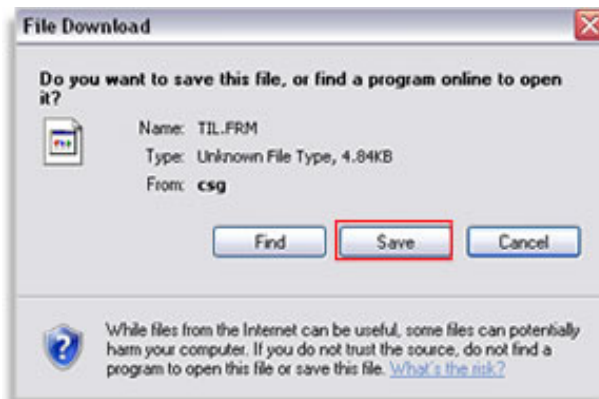
If you are using Point version 6.2 or below, you must upgrade to Point version 7.0 before updating the Truth-In-Lending form. These forms will not work for Point version 6.2 or earlier.

 **Attachments**
TIL.FRM

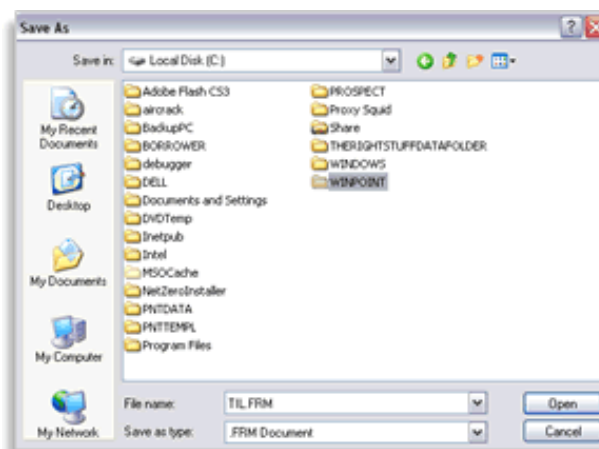
4.8 KB

Downloaded 462 time(s)

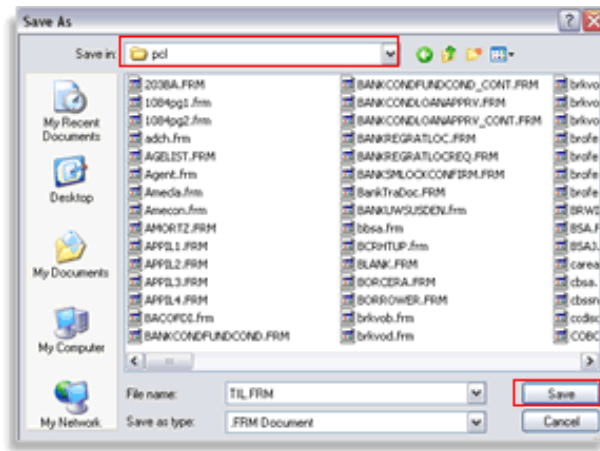
1. Close Point.
2. From the Attachment section of this article, click **TIL.FRM**.
3. Select **Save**.



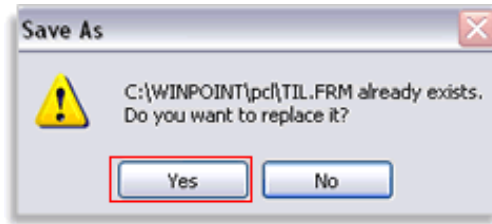
4. From the Save As window, go to **My Computer** > double-click **Local Disk C:**.
5. Double-click the **Winpoint** folder.



6. Double-click the PCL folder.



7. Click **Save** and then click **Yes** to replace the existing file.







8. Open Point and print the Truth-In-Lending.

 [Print](#)  [Add Comment](#)

How helpful was this article to you?

Related Articles

-  **0153 APR on the Truth-in-lending form is incorrect**
★★★★☆ 8-15-2006 Views: 1847
-  **0407 Creating a loan program to default the Truth-In-Lending form**
★★★★☆ 8-14-2006 Views: 1613
-  **0491 Where is the Fair Lending Notice?**
★★★★★ 11-8-2006 Views: 1608
-  **0169 Generating mailing labels with Point and Word 2002(XP)/2003, Point 5.4 and below**
(No rating) 8-11-2006 Views: 1929

User Comments

 [Add Comment](#)

No comments have been posted.